

Thrane & Thrane

**TT-3080A Capsat® Messenger
Certified Solution**

DIVA LAN ISDN Modem

This document describes how to set-up and configure the DIVA LAN ISDN Modem in conjunction with the Capsat Messenger.



Diva LAN ISDN
Modem



TT-3080A
Capsat® Messenger

Description

The DIVA LAN ISDN Modem is a powerful networking solution for small office/home office and branch office users. Up to four computers can be connected. It is a complete networking, phone, fax and data communications systems in one box. It is a plug'n'play installation using Window Set-up Wizard and web-based Configuration Wizard, which makes it easy to follow. When you open your web browser or E-mail you are automatically connected, no dial-up networking required. It can very easily be interfaced with the Capsat Messenger.

With this solution you can connect to the Internet and communicate via E-mail, fax and phone through the Capsat Messenger.

Model Number

DIVA LAN ISDN Modem

Product Manuel

206-274-01

References

EICON Technology Corporation, www.eicon.com

Special Conditions

The computer connected to the DIVA LAN ISDN Modem must have:

- A 10BASE-T Ethernet network interface card.
- A CD-ROM drive.
- It must be set to obtain its IP address automatically (DHCP client).
- It must not be configured to use a DNS server.

Information in this document is subject to change without notice and does not represent a commitment on the part of Thrane & Thrane A/S.

© 2000 Thrane & Thrane A/S. All rights reserved. Printed in Denmark.



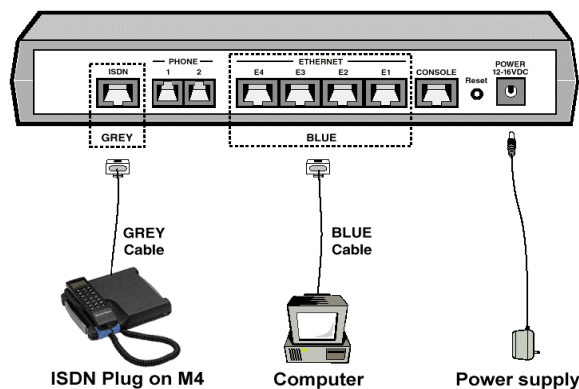
The computer you are going to use to configure the DIVA LAN ISDN Modem must have:

- Web browser software (Netscape 3.01 or later, or Internet Explorer 4 or later).

The connection protocol has to be the PPP (Point-to-Point Protocol) which operates on a single 64 Kbps ISDN channel. The Capsat Messenger communicates through only one B-channel.

Instructions

This certified solution may be accomplished as follows: Follow the set-up procedure in the manual that came with the DIVA LAN ISDN Modem. Interface it to the Capsat Messenger via the ISDN port. The set-up procedure looks as follow:

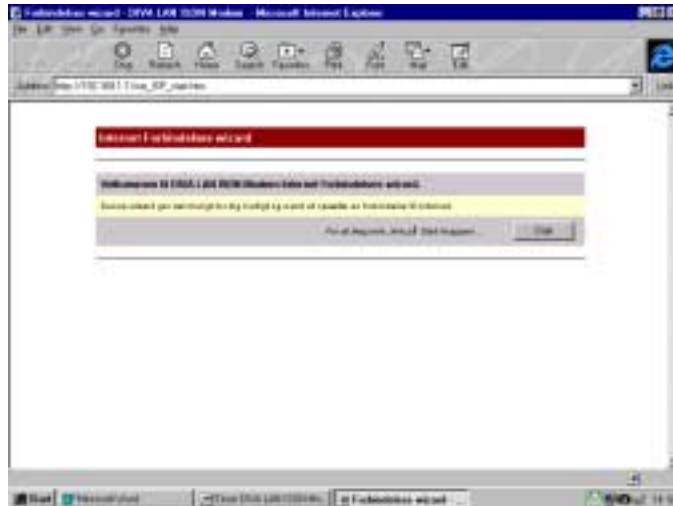


Install the software on your computer. Place the CD in the CD-ROM drive and The DIVA LAN Modem Setup Wizard starts automatically after a few seconds. Follow the instructions on your screen. The first screen looks like this:



If no new devices are discovered, please follow the instructions in appendix A.

It is now possible to configure an Internet connection. It is done by a series of web pages that are inside the DIVA LAN ISDN Modem. The first screen looks like this:



After clicking the start button the “Internet Network Setup” page appears:



Fill in the necessary information such as telephone and account number. The PPP has to be “PPP (only 1 channel). The PPP is the best protocol connection in conjunction with the Capsat Messenger.

Click “Next” and the “Control and Save” page appears:



Verify your settings and click “Test”.

You should now be connected to the Internet.

If the test was not successful, use the links provided by the wizard for information on how to correct the problem.

You can easily upgrade the DIVA LAN ISDN Modem to the latest firmware by using the web configuration program.

You are now able to connect to the Internet and your corporate network via the Capsat Messenger.

Test

It is always a good idea to test the equipment on the terrestrial ISDN to make sure that there are no faults on the equipment.

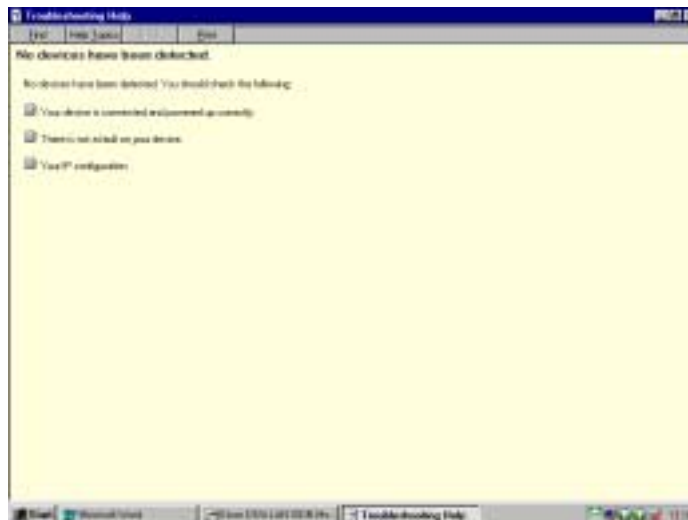
Appendix A

Your devices are not responding. The following screen will appear with a warning:



Click the “help” button and it will guide you through the set-up of the TCP/IP protocol.

The next screen appears:



If your device is connected and powered up correctly and there is no fault on your device, click IP configuration. It takes you to the next window.

It is now easy to follow the instructions on the screen. If your network does not automatically assign an IP address, you can do it manually in TCP/IP Properties, shown below.



If you do not use the DIVA LAN ISDN Modem as your DHCP server, the IP address assigned to your computer has to be the same IP network as the DIVA LAN ISDN Modem. The following addresses are used:

IP address: 192.168.1.10
Subnet Mask: 255.255.255.0

Version 1.0 032002